

# Datasheet

## GSM Commander



Get the benefit of **total control** & **peace of mind** for your remote sites or equipment. Our SmartSetup computer software with point-and-click features enables you to create your own application.

The **GSM Commander** can monitor and control your equipment and provide you with realtime 2-way communication via SMS, GPRS and voicecall.

### Why GSM Commander?

- **Point-and-click** features for easy setup
- **Expandable** hardware plug-ins
- GSM controller with **built-in** Logic controller
- Advanced **power and battery** management
- **Local** developed, manufactured & supported

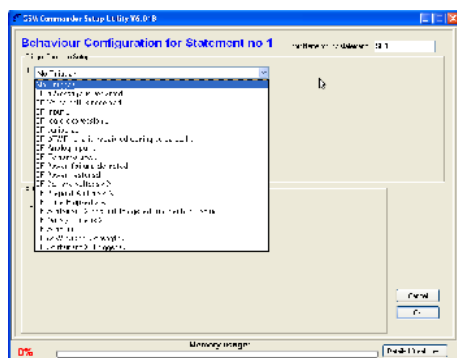
### Product Highlights

- Up to 32 opto isolated digital **inputs**
- Up to 32 relay **outputs** (8amp)
- Up to 9 **analogue** input
- 10 – 24vDC powered
- 1 backup battery input
- 2 **temperature** inputs (additional 9 on analogues)
- **Serial** interface port
- Dual SIM for **redundancy** (Professional version)
- External antenna jack
- **SMS, Voicecall** and **GPRS** capability

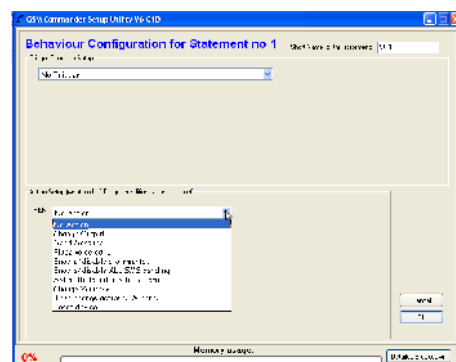


## Top reason why customers buy this product:

*(click on these graphics to view a 4 min video)*



**SmartSetup (trigger features)**



**SmartSetup (action features)**

## GSM Commander Base Units

Base units feature an internal Cellular Engine that allows it to connect to a cellular network to send and receive SMS messages, place and receive Voice Calls, enable realtime communication via GPRS. A SIM card is fitted by the user. The device is easily configured using the SmartSetup software on a computer. This allows the user to create his own setup for his own application. This easy to use, point-and-click software is fantastic.

### Feature Matrix

	GB0101s SMS	GC0321 LITE	GC0641 STANDARD	GC1281 PROFESSIONAL	PLC1280 PLC
Software	none	V6	V6	V6	V6
Onboard Inputs	1	2	2	2	2
Onboard Outputs	1	2	2	2	2
Max Extendable I/O	none	12/12	22/22	32/32	32/32
No. of Statements	8	32	64	128	128
Setup Memory	n/a	2kb	4kb	8kb	8kb
Temperature Probes supported	0	2	2	2	2
Analogue Inputs	0	1	1(9)	1(9)	1(9)
Battery/Power Monitor	YES	YES	YES	YES	YES
USB Configuration	NO	YES	YES	YES	YES
DTMF Decoder	NO	NO	YES	YES	NA
SIM Card Slots	1	1	1	2	NA
IO Constraints supported	NO	NO	YES	YES	YES
Variables Supported	NO	NO	YES	YES	YES
GPRS basic functions	NO	YES	YES	YES	NA
GPRS advanced functions	NO	NO	YES	YES	NA
Max Phone numbers	16	250	512	512	NA
Max messages	16	64	128	128	NA

### So what are the differences between the models exactly?

#### GC0641: Standard GSM Commander

Most popular unit. Configure up to 64 behaviour statements. Expandable up to a maximum of 22 inputs and 22 outputs. Configuration via USB, using SmartSetup software (free). Supports DTMF and logic control. Advanced GPRS functions on AirDrive platform.

#### GC1281: Professional GSM Commander

Configure up to 128 behaviour statements. Expandable up to a maximum of 32 inputs and 32 outputs. Configuration via USB, using SmartSetup software (free). Supports DTMF, logic control and dual SIMcards (network redundancy). Advanced GPRS functions on AirDrive platform.

#### GC0321: Lite GSM Commander

Configure up to 32 behaviour statements (from the "032" in the name). Expandable up to a maximum of 12 inputs and 12 outputs. Configuration via USB, using SmartSetup software (free). No DTMF or logic control. Status viewing only on GPRS AirDrive platform.

#### GB0101S: SMS Commander

Basic entry-level model. Configure up to 8 behaviour statements via SMS. Not expandable. For applications where you need to do only one or two tasks, and where small size and low cost are the important factors.

**GC1280: PLC Commander**

Closely mimics basic PLC. No GSM functionality. Configure up to 128 behaviour statements. It can monitor and control equipment according to a preset configuration, providing automated tasks to be executed. It is expandable up to a maximum of 32 inputs and 32 outputs.

**What is GPRS & AirDrive?**

Airdrive is a web based interface for realtime logging, monitor & control of remote GSM Commanders. It uses the low cost GPRS data platform that's available on the GSM network. Some functions available on the AirDrive platform: Realtime Status Viewing, Remote Configuration, Logging, History, Events, Manage multiple users, Control Outputs, MySQL access to raw data, IMS (Incident Management System).

**Base unit Technical Specifications**

<b>Digital Inputs:</b>	Opto-isolated. Inputs draw 10-30mA, depending on the voltage. Can accept DC signals of any type, including: <ul style="list-style-type: none"> <li>- Dry Contacts</li> <li>- Open Collector (NPN)</li> <li>- Open Collector (PNP)</li> <li>- DC Voltage (6-18V)</li> </ul>
<b>Digital Outputs:</b>	SPDT Relays Rating: 8Amp DC (10-48v) ) <b>OR</b> 4Amp AC (110-400v) ( <i>non inductive loads</i> )
<b>Current Consumption:</b>	60mA at Idle (no inputs or outputs active)
<b>Power Supply:</b>	10-24V DC via DC Jack or Screw Terminal It is advised that the base unit be powered from its own dedicated supply in industrial applications.
<b>Operating Temperature:</b>	-10 to +60deg C
<b>Storage Temperature:</b>	-20 to +85deg C
<b>Dimensions:</b>	"GC" Series: 148 x 86 x 28mm "GB" Series: 127 x 73 x 28mm

Note: In industrial applications, it is advised that the GSM Commander be installed into its own metal housing and be powered from a separate power supply. (As opposed to sharing one with electrical equipment).

**Expansion Units****(Compatible with "GC and PLC" Series only)**

Expansion units are connected to GC series base units to expand the number of inputs and outputs that are available. Multiple expansion units can be connected to a base unit, to provide for up to 32 inputs and 32 outputs. (Different base unit models cater for different maximum numbers of expanded Input/outputs – See the base unit feature matrix)

**Current Expansion units include:**

GX0505 : 5 x input and 5 x output Expansion

GX1000 : 10 x input Expansion

GX1000DCL-BOX : 10 x Input Low power Expansion unit (Dry contacts only)

GXS081A-BOX : 8 x input Analog expansion 4-20mA / 0-30v (Serial interface)

## Expansion units Technical Specifications

<b>Digital Inputs:</b>	Opto-isolated. Inputs draw 10-30mA, depending on the voltage. Can accept DC signals of any type, including: <ul style="list-style-type: none"> <li>- Dry Contacts</li> <li>- Open Collector (NPN)</li> <li>- Open Collector (PNP)</li> <li>- DC Voltage (6-18V)</li> </ul>
<b>Digital Outputs:</b>	SPDT Relays Rating: 8Amp DC (10-48v) <b>OR</b> 4Amp AC (110-400v) ( <i>non inductive loads</i> )
<b>Current Consumption:</b>	60mA at Idle (no inputs or outputs active)
<b>Power Supply:</b>	10-24V DC via DC Jack or Screw Terminal
<b>Operating Temperature:</b>	-10 to +60deg C
<b>Storage Temperature:</b>	-20 to +85deg C
<b>Dimensions:</b>	148 x 104 x 28mm

## Additional Products

**House Commander** is a truly affordable DIY home automation system. Create your own automation system that also offers 2-way cellphone control and monitoring. Based on the well-known GSM Commander product, House Commander is the perfect solution to "pimp up" your house! Control and monitor everything from [one single device!](#)

**Ready-To-Mount (RTM)** application specific Commanders. IP65 steel box that is fitted with GSMCommander, Battery, PSU, Battery protector, Antenna and some application specific hardware. The following standard RTM boxes are available: Pump / Pivot Commander, Cable Theft Commander, Instrument Commander, Power Commander, M2M Commander and a Generic RTM Commander.

**BaseLogger** software is developed to manage from 1 to 127 GSM Commander field devices, using **SMS** communication. Effective system for basic site control and critical events reporting.

## Accessories

### Temperature probes

GT002 : Temperature Interface. Allows up to 2 x temp probes to connect to a "GC" series Base Unit.

GT001-1 : 0°C – 100°C temperature probe with 2 wire for "GC" units (requires GT002)

GT011-1 : -17°C – 35°C temperature probe with 2 wire for "GC" units (requires GT002)

### Antennas

A range of antennas is available for outdoor applications or weak reception areas.

### Wireless Technology

RF transceivers for wireless comms between 2 GSM Commanders. Remotes to operate closerange devices from the GSM Commander such as gate motors, outside lights, etc.

### Cable Theft Prevention

A complete range of products and solutions are available to combat this problem.

### Other

Dinrail clips, Battery protector, DC-filter, Kwh meter, pulse stretcher, PT100's and more...