

# HITEMP140

## AUTOCLAVE TEMPERATURE

### DATA LOGGER



#### Features

- ±0.1°C (0.18°F) Accuracy
- Operates Up To 140°C (284°F)
- Submersible (IP68)
- N.I.S.T. traceable
- User Replaceable Battery
- Rugged
- Programmable start time
- Programmable stop time
- Engraved Label
- Probe Lengths Up To 7"
- Battery Life Indicator

#### Benefits

- Simple Setup and Installation
- Minimal Long-Term Maintenance
- Long-Term Field Deployment

#### Applications

- Autoclave Verification
- Implement HACCP Programs
- Food Preparation and Processing
- Environmental Studies
- Well Monitoring
- Dishwasher Testing
- Pasteurization

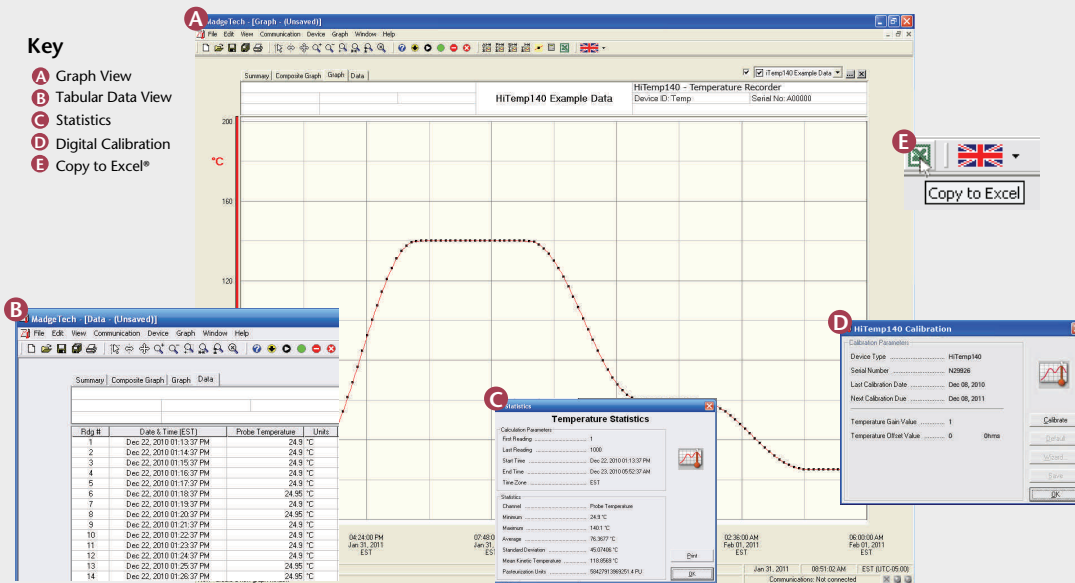
The HiTemp140 is a rugged, high precision, temperature data logger that is built for use in harsh environments. This stainless steel device is submersible, can withstand temperatures up to 140°C (284°F) and has an accuracy of +/-0.1°C (0.18°F) over the entire operating range.

The HiTemp140 can store up to 32,700 readings, and features a 2" rigid external probe capable of measuring extended temperatures, up to 260°C (500°F). Custom probe lengths are available upto 7", also the device records date and time stamped readings, and has non-volatile solid state memory that will retain data even if the battery becomes discharged.

Using the MadgeTech Software, starting, stopping and downloading the HiTemp140 is simple and easy. Graphical, tabular and summary data is provided for analysis and data can be viewed in °C, °F, K or °R. The data can also be automatically exported to Excel® for further calculations.



## MADGETECH DATA LOGGER SOFTWARE



#### Software Features:

- Multiple graph overlay
- Statistics
- Digital calibration
- Zoom in/ zoom out
- Lethality equations (F<sub>0</sub>, PU)
- Mean Kinetic Temperature
- Full time zone support
- Data annotation
- Min./Max./Average lines
- Data table view
- Automatic report generation
- Summary view
- Multilingual

# HITEMP140 SPECIFICATIONS\*

**Temperature Sensor:** 100Ω Platinum RTD

**Probe Measurement Range:** -200°C to +260°C (-328°F to +500°F)

**Temperature Resolution:** 0.01°C (0.02°F)

**Calibrated Accuracy:** ±0.1°C/±0.18°F  
(-20°C to +140°C/-4°F to +284°F)

- Start Modes:**
- Software programmable immediate start
  - Delay start up to eighteen months in advance

- Stop Modes:**
- Manual through software
  - Timed (specific date and time)

**Real Time Recording:** May be used with PC to monitor and record data in real time

**Password Protection:** An optional password may be programmed into the device to restrict access to configuration options. Data may be read out without the password.

**Memory:** 32,700 readings

**Wrap Around:** Yes

**Reading Rate:** One second up to once every 24 hours

**Battery Type:** 3.6V high-temperature lithium battery included; **user replaceable**

**Battery Life:** 1 year typical  
(1 minute reading rate at 25°C/77°F)

**Calibration:** Digital calibration through software

**Calibration Date:** Automatically recorded within device

**Data Format:** Date and time stamped °C, °F, K, °R

**Time Accuracy:** ±1 minute/month at 20°C to 30°C (68°F to 86°F) (Stand alone mode)

**Computer Interface:** IFC400 USB docking station required; 125,000 baud

**Software:** XP SP3/Vista/Windows 7

**Operating Environment:** -20°C to +140°C (-4°F to +284°F), 0%RH to 100%RH

**Dimensions (Body):** 2.7" x 0.97" dia. (67mm x 25mm dia.)

**Dimensions (Probe\*\*):** 2" x .188" to .125" transitional dia.  
50mm x 3.8mm to 3.2mm transitional dia.

**Weight:** 4.2 oz (120g)

**Material:** 316 Stainless Steel

**Approvals:** CE

**BATTERY WARNING:** WARNING: FIRE, EXPLOSION, AND SEVERE BURN HAZARD. DO NOT SHORT CIRCUIT, CHARGE, FORCE OVER DISCHARGE, CRUSH, PENETRATE, OR INCINERATE. BATTERY MAY LEAK OR EXPLODE IF HEATED ABOVE 150°C (302°F).

\*SPECIFICATIONS ARE SUBJECT TO CHANGE WITHOUT NOTICE. SPECIFIC WARRANTY REMEDY LIMITATIONS APPLY.

\*\*Other probe lengths up to 7" available. Contact MadgeTech for details.

## ORDERING INFORMATION

MODEL	DESCRIPTION
HITEMP140	High Temperature Data Logger with a 2" probe
HITEMP140-1	High Temperature Data Logger with a 1" probe
HITEMP140-5.25	High Temperature Data Logger with a 5.25" probe
HITEMP140-7	High Temperature Data Logger with a 7" probe
IFC400	Docking station with USB cable, software and manual
ER1425S-HT	Replacement battery for the HiTemp140
*NIST	N.I.S.T. Calibration Certificate

ASK ABOUT  
OUR OTHER  
DATA  
LOGGERS

Temperature  
Humidity  
Pressure  
pH  
Level  
Shock  
LCD Display  
Pulse/Event/State  
Current  
Voltage  
Wireless  
Intrinsically Safe  
Spectral Vibration  
Motion