

THERM•A•LERT-P

TEMPERATURE MONITORING AND ALARMING SYSTEM WITH WIRELESS TWO-WAY COMMUNICATION



Features

- Wireless Two-Way Communication
- Precision RTD Sensing Element
- View Data in Real-Time
- 2 Year Battery Life
- Battery Life Indicator
- N.I.S.T. Traceable
- Field Upgradeable

Benefits

- Fast Installation
- Minimal Long-Term Maintenance
- Full Communication From One PC

Applications

- Refrigerator/Freezer Monitoring
- Calibration chamber monitoring
- Laboratory monitoring
- Hospitals
- Blood Banks
- HVAC

The MadgeTech Therm•A•Lert-P is a temperature monitoring and alarming system, designed specifically for laboratories, warehouses and other environments where temperature monitoring is critical. The system can be used to monitor a single location, or expanded to monitor hundreds of locations over a broad area (additional MadgeTech wireless loggers and transceivers may be required).

The Therm•A•Lert-P provides real time wireless, or wired, notification of temperature. The data logger features user programmable alarms that can be configured to send a message via text message (standard SMS rates apply), on-screen alarm and/or via e-mail if an alarm condition is met. The standard Therm•A•Lert-P includes an RTD probe with a 9' lead wire and a 4.5" probe sheath.

The Therm•A•Lert-P device is equipped with two-way wireless communication. MadgeTech wireless systems offer a flexible and robust integration for many applications. One PC can provide control and communication to all the wireless loggers within range, or the system can be divided into smaller subnets (using a different RF channel). In addition to the data being transmitted wirelessly, the Therm•A•Lert-P also stores each reading to non-volatile internal memory for a secure backup. Customers can set up automatic archiving preferences, ensuring all data is saved and retained to comply with federal regulations.

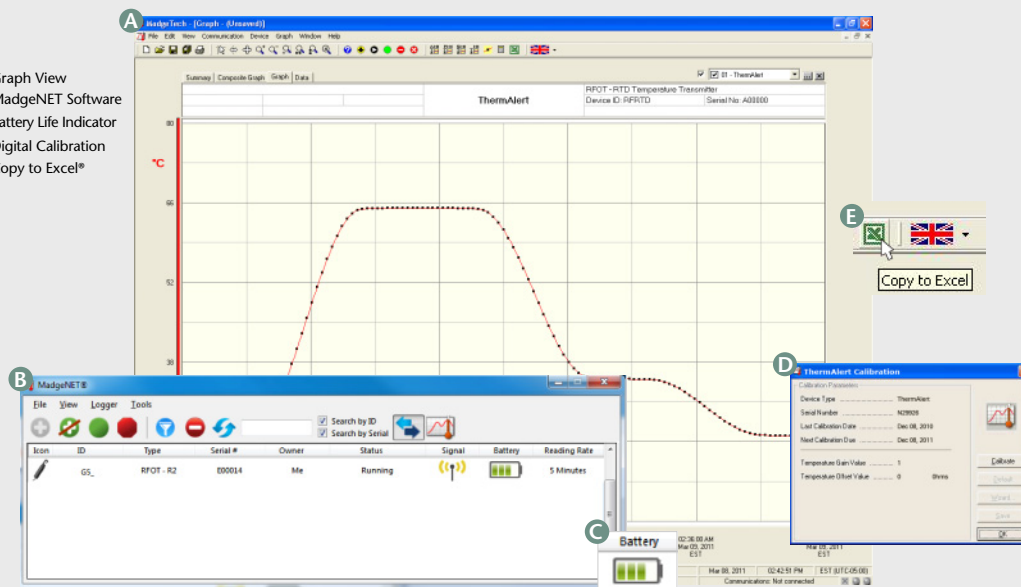
The Therm•A•Lert-P probe can be mounted inside an ethylene glycol bottle. When placed in a chamber, the temperature of the ethylene glycol is measured rather than air temperature. This more accurately represents the temperature of the contents inside the chamber, and prevents false alarm triggers when the chamber door is opened and closed. The glycol bottles are available in 30ml, 60ml and 250ml sizes.



MADGETECH DATA LOGGER SOFTWARE

Key

- A Graph View
- B MadgeNET Software
- C Battery Life Indicator
- D Digital Calibration
- E Copy to Excel*



Software Features:

- Multiple graph overlay
- Statistics
- Digital calibration
- Zoom in/ zoom out
- Lethality equations (F_0 , PU)
- Mean Kinetic Temperature
- Full time zone support
- Data annotation
- Min./Max./Average lines
- Data table view
- Automatic report generation
- Summary view
- Multilingual

THERM•A•LERT-P SPECIFICATIONS*

Temperature**

Probe Temperature Range:	-200°C to +260°C (-328°F to +500°F)
Lead Wire Range:	-200°C to +200°C (-328°F to +392°F)
Glycol Bottle (optional) Range:	-50°C to +80°C (-58°F to +176°F)
Resolution:	0.01°C (0.018°F)
Probe Calibrated Accuracy:	±0.1°C/±0.18°F (-20°C to +80°C/-4°F to +176°F) ±0.5°C/±0.9°F (outside of specified range)

Wireless

RF Frequency:	2.45GHz IEEE 802.15.4 ultra-low power MadgeNET wireless transceiver with fully bi-directional communication
Band:	ISM band 2.405-2.48 GHz
Maximum Output Power:	+0dBm typical
Receiver Sensitivity (RFC1000):	-95dBm typical
Range:	Line-of-sight 400', indoors 150'

*SPECIFICATIONS ARE SUBJECT TO CHANGE WITHOUT NOTICE. SPECIFIC WARRANTY REMEDY LIMITATIONS APPLY. CALL 1-603-456-2011 OR GO TO WWW.MADGETECH.COM FOR DETAILS.

**Temperature specifications based on ideal 100 Ω Pt RTD compliant with IEC 751 (1983) and ITS-90, 5000Ω.

BATTERY WARNING: Do not recharge, disassemble, heat above 125°C (257°F), incinerate or expose contents to water. Vent, rupture or explosion may result and cause severe burns.

General

Reading Rate:	One reading every two seconds to one every 24 hours
Memory:	30,000 readings; software configurable memory wrap
Wrap Around:	Yes
Start Modes:	• Immediate start
Calibration:	Digital calibration through software
Calibration Date:	Automatically recorded within device
Battery Type:	3.6V lithium battery included; user replaceable
Battery Life:	2 years typical
Data Format:	Date and time stamped °C, °F, K, °R
Time Accuracy:	±1 minute / month (at 25°C)
Computer Interface:	RFC1000 required
Software:	XP SP3/Vista/Windows 7
Operating Environment:	-20°C to +80°C (-4°F to +176°F), 0%RH to 95%RH non-condensing
Dimensions:	Data Logger: 2.2" x 5.0" x 1.3" (55mm x 127mm x 33mm) Wire: 9' Probe: 3/16" dia x 4.5" Glycol bottle: 30ml: 2.5" x 1.5" x 1.5" (63mm x 38mm x 38mm) 60ml: 3.3" x 1.6" x 1.6" (84mm x 41mm x 41mm) 250ml: 5.7" x 2.3" x 2.3" (145mm x 58mm x 58mm)
Enclosure Material:	ABS Plastic
Approvals:	CE

ORDERING INFORMATION

MODEL	DESCRIPTION
THERM•A•LERT-P	Temperature data logger with wireless transceiver equipped with precision RTD probe
THERM•A•LERT-P-30	Temperature data logger with wireless transceiver equipped with RTD probe and 30ml glycol bottle.
THERM•A•LERT-P-60	Temperature data logger with wireless transceiver equipped with RTD probe and 60ml glycol bottle.
THERM•A•LERT-P-250	Temperature data logger with wireless transceiver equipped with RTD probe and 250ml glycol bottle.
RFC1000	Wireless RF transceiver for use with MadgeNET. USB to mini USB adapter included to connect to PC.
RFC1000-REPEATER	Wireless RF transceiver for use with MadgeNET. USB to mini USB adapter and power supply included.
*N.I.S.T.	N.I.S.T. Calibration Certificate
TLH-5903	Replacement battery for Therm•A•lert-P

ASK ABOUT
OUR OTHER
DATA
LOGGERS

Temperature
Humidity
Pressure
pH
Level
Shock
LCD Display
Pulse/Event/State
Current
Voltage
Wireless
Intrinsically Safe
Spectral Vibration
Motion

*To order the product with the N.I.S.T. certificate add **-CERT** to the end of the part number and add \$60.00 to the price.